

L

ES

LES BOIS

WOOD POETRY

BO

IS



KRONOS

CERAMICHE

LES BOIS

WOOD POETRY



KRONOS

CERAMICHE

LES BOIS

WOOD POETRY

KRONOS REINVENTA L'IMMAGINARIO DEL GRÈS EFFETTO LEGNO, CON UN PROGETTO CHE ESPRIME IL VALORE DELLA MATERIA ATTRAVERSO LA CURA DEL DETTAGLIO, OGNI VENATURA, OGNI NODO, OGNI IRREGOLARITÀ DIVENTA ESPRESSIONE DI ELEGANZA TATTILE DECLINATA IN 5 NUANCE DAI COLORI INTENSI CON UNA PARTICOLARE SENSIBILITÀ PER I COLORI SCURI.

KRONOS RÉINVENTE L'IMAGINAIRE DU GRÈS EFFET BOIS, AVEC UN PROJET QUI EXPRIME LA VALEUR DE LA MATIÈRE À TRAVERS LE SOIN DU DÉTAIL : CHAQUE VEINURE, CHAQUE NŒUD, CHAQUE IRRÉGULARITÉ DEVIENNENT L'EXPRESSION D'UNE ÉLÉGANCE TACTILE DÉCLINÉE DANS 5 NUANCES AUX COULEURS INTENSES AVEC UNE SENSIBILITÉ PARTICULIÈRE POUR LES COULEURS FONCÉES.

KRONOS REINVENTS THE COLLECTIVE IDEA OF WOOD-EFFECT STONEWARE, WITH A PROJECT DESIGNED TO EXPRESS THE VALUE OF THE MATERIAL THROUGH ATTENTION TO DETAIL, IN WHICH EACH GRAIN PATTERN, EACH GNARL AND EACH IRREGULAR FEATURE BECOMES AN EXPRESSION OF TACTILE ELEGANCE, IN 5 INTENSE SHADES, WITH A PARTICULAR ACCENT ON DARK COLOURS.

KRONOS ERFINDET DIE IDEE DES FEINSTEINZEUGS MIT HOLZOPTIK MIT EINEM PROJEKT NEU, DAS DEN WERT DES MATERIALS ANHAND DER DETAILLIEBE ZUM AUSDRUCK BRINGT: JEDE MASERUNG, JEDER KNORREN, JEDE UNREGELMÄSSIGKEIT WIRD ZUM AUSDRUCK EINER GREIFBAREN ELEGANZ, DIE IN 5 INTENSIVEN FARBNUANCEN MIT EINEM BESONDEREN AUGENMERK AUF DEN DUNKLEN FARBEN AUSGEARBEITET IST.

COLORS



COBOLO



MOGANO



BOCOTE



SLAVONIA



SARAWA

SIZES

10 mm
3/8"



80x180
31 1/2"x70 3/4"



26,5x180
10 1/2"x70 3/4"



20x180
7 7/8"x70 3/4"



20x120
7 7/8"x47 1/2"



60x120
23 3/8"x47 1/2"



20x60
7 7/8"x23 3/8"



20x40
7 7/8"x15 3/4"



9x58,5
3.5"x23"



22,5x39,5
8.8"x15.5"

DECORS



60x120
23 3/8"x47 1/2"

LOUVRE



60x120
23 3/8"x47 1/2"

VILLANDRY



15x120
6"x47 1/2"

BAGUETTE 3D



29x120
11 3/4"x47 1/2"

VERSAILLES



80x80
31 1/2"x31 1/2"

BATONNET 3D



29x59
11 3/8"x23 3/8"

CHEVRY



30x30
11 3/4"x11 3/4"

OTTONE

1x0,8x120
0.4"x0.3"x47 1/2"

2 CM

20 mm
3/4"



80x180
31 1/2"x70 3/4"



26,5x180
10 1/2"x70 3/4"



20x120
7 7/8"x47 1/2"



40x120
15 3/4"x47 1/2"



40x120
15 3/4"x47 1/2"

DECORS

LES BOIS



INDEX

LES BOIS

COBOLO



P.12



P.14



P.18

MOGANO



P.24



P.26



P.32

BOCOTE



P.39



P.42



P.44

SLAVONIA



P.54



P.57



P.59

SARAWA



P.62



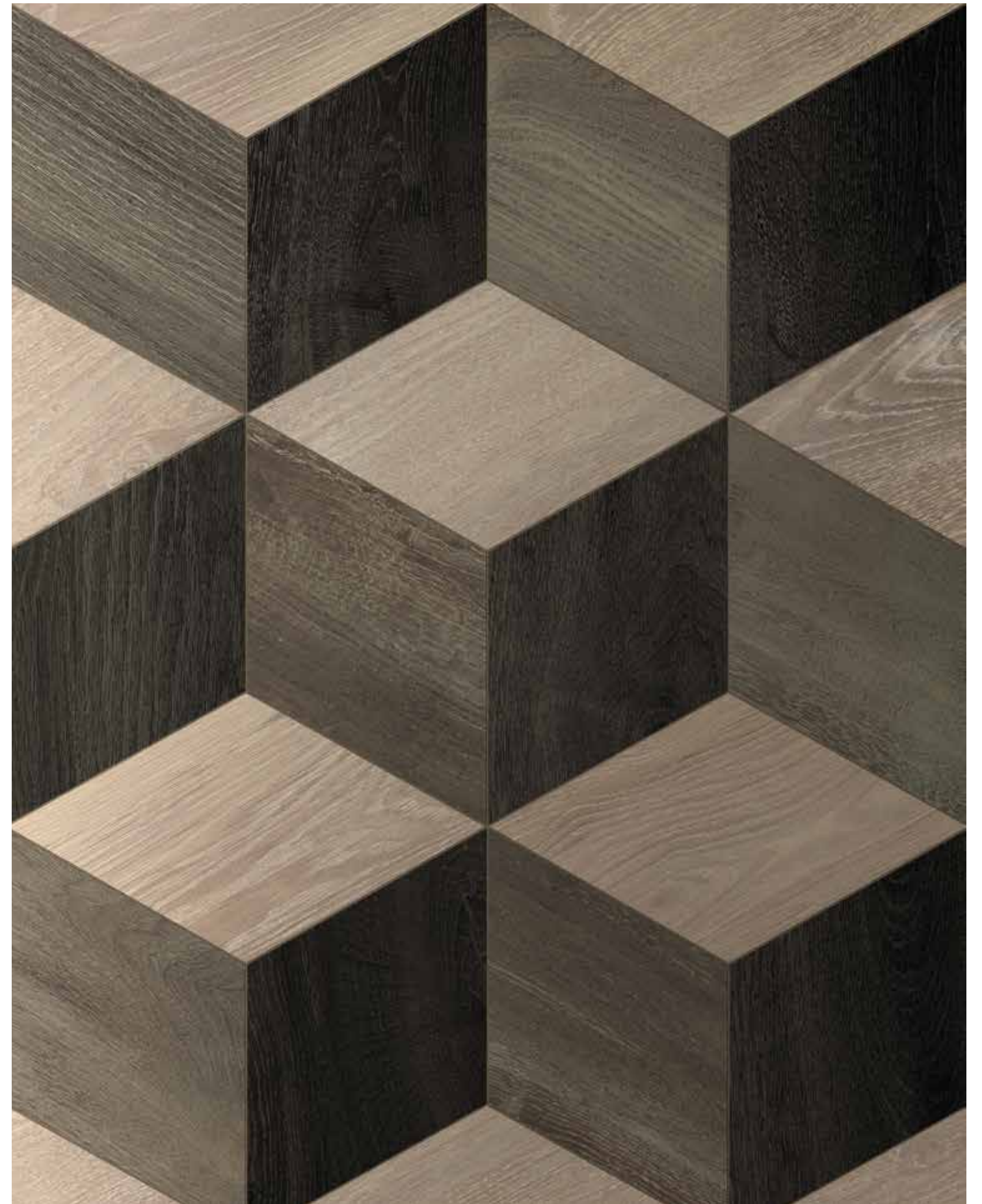
P.68



P.70

COBOLO

LES BOIS





WALL PORFIDO 60x120
FLOOR COBOLO 2.0 40x120
STEPS COBOLO





FLOOR COBOLO 26,5x180 + ROMBO mod. 09: COBOLO, BOCOTE, SLAVONIA
WALL CARRIERE DU KRONOS GENT 80x180
OUTDOOR FLOOR COBOLO 2.0 40x120



FLOOR COBOLO 26,5x180 + ROMBO mod. 09: COBOLO, BOCOTE, SLAVONIA



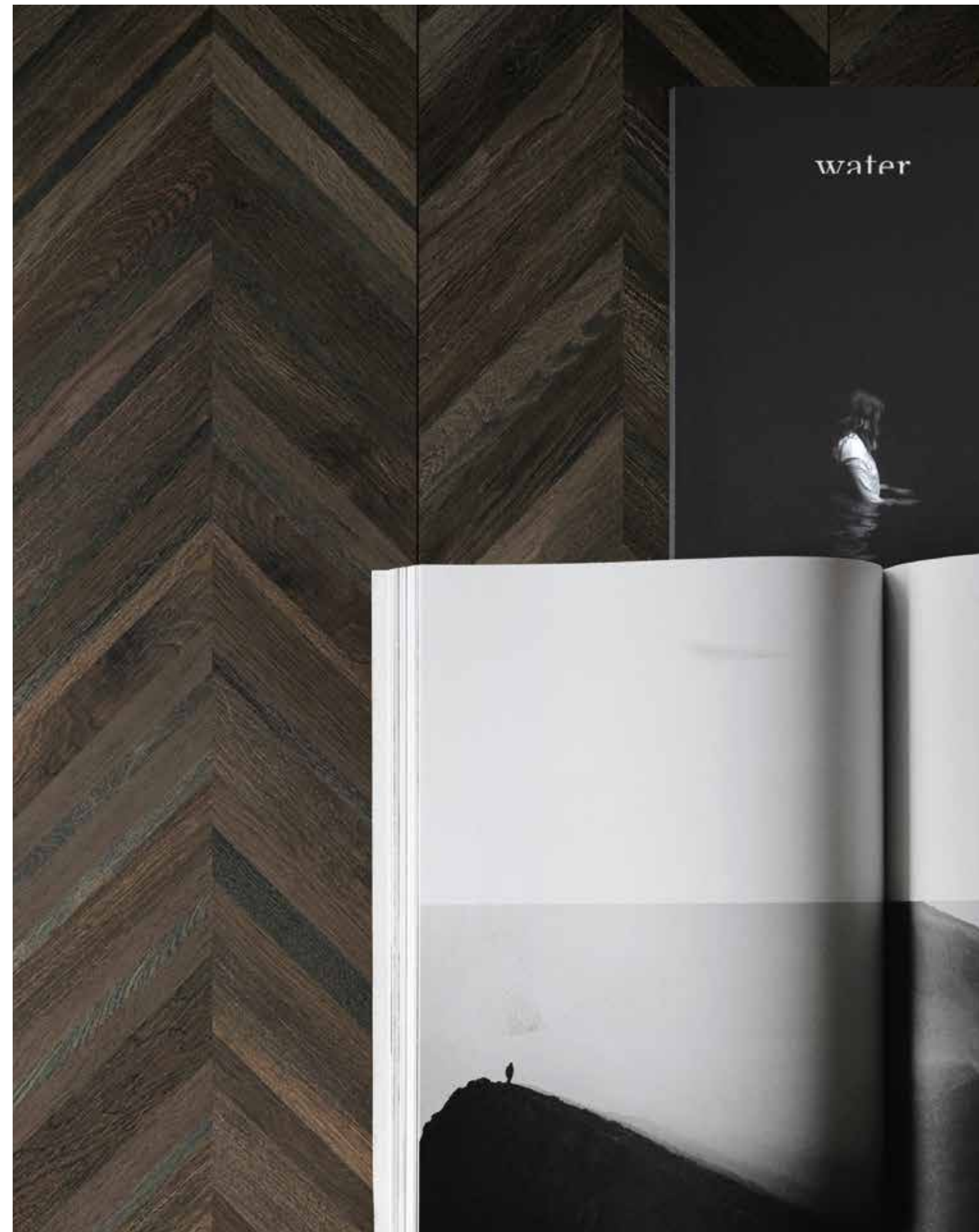
FLOOR MAXI CARRIERE DU KRONOS GENT 120x120
COUNTER BAGUETTE MO-COBOLO 29x120
COUNTER TOP COBOLO 80x180



FLOOR MAXI CARRIERE DU KRONOS GENT 120x120
BENCH COBOLO 80x180
WALL BAGUETTE MO-COBOLO 29x120

MOGANO

LES BOIS





FLOOR MOGANO 20x40 - 20x60

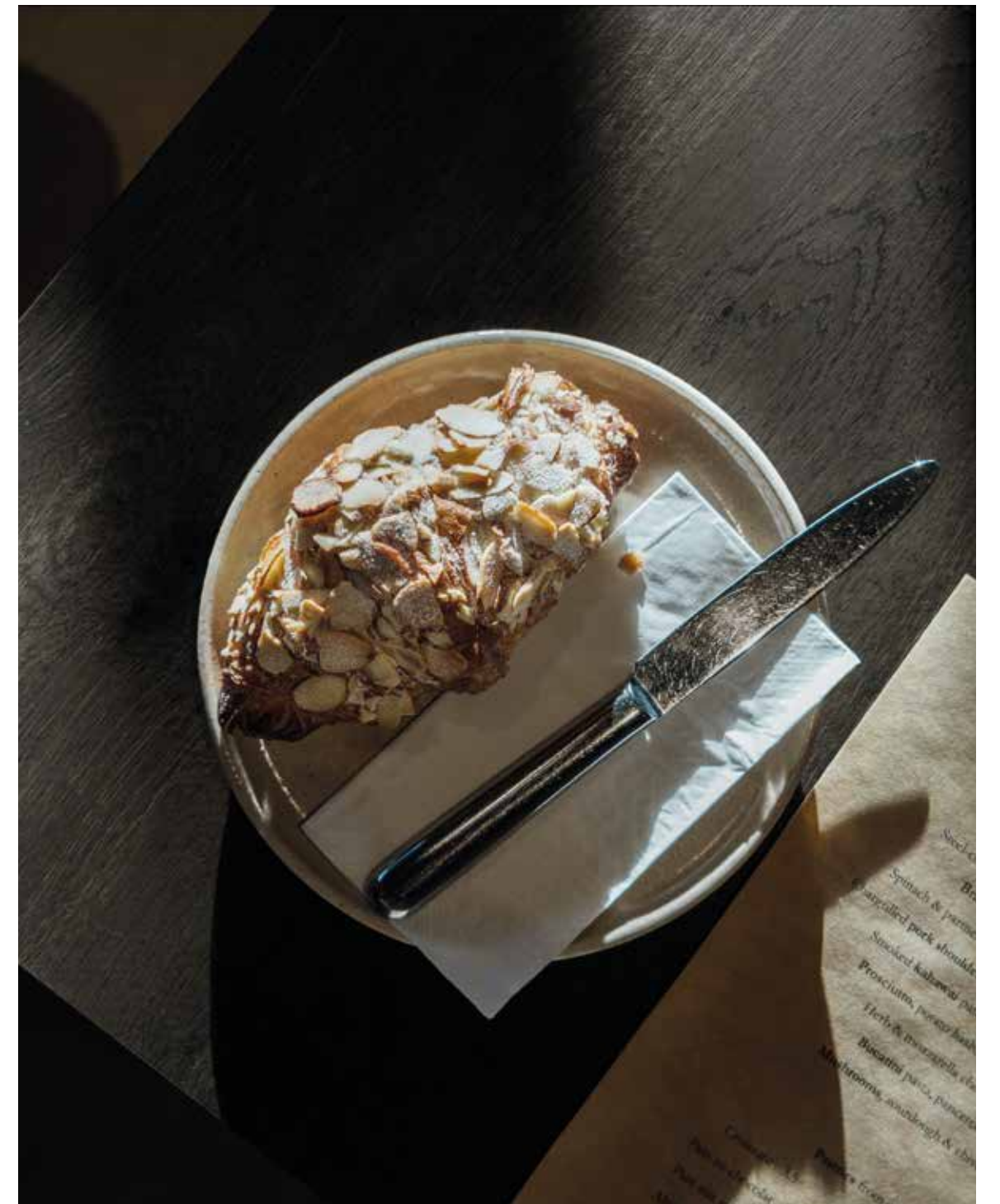
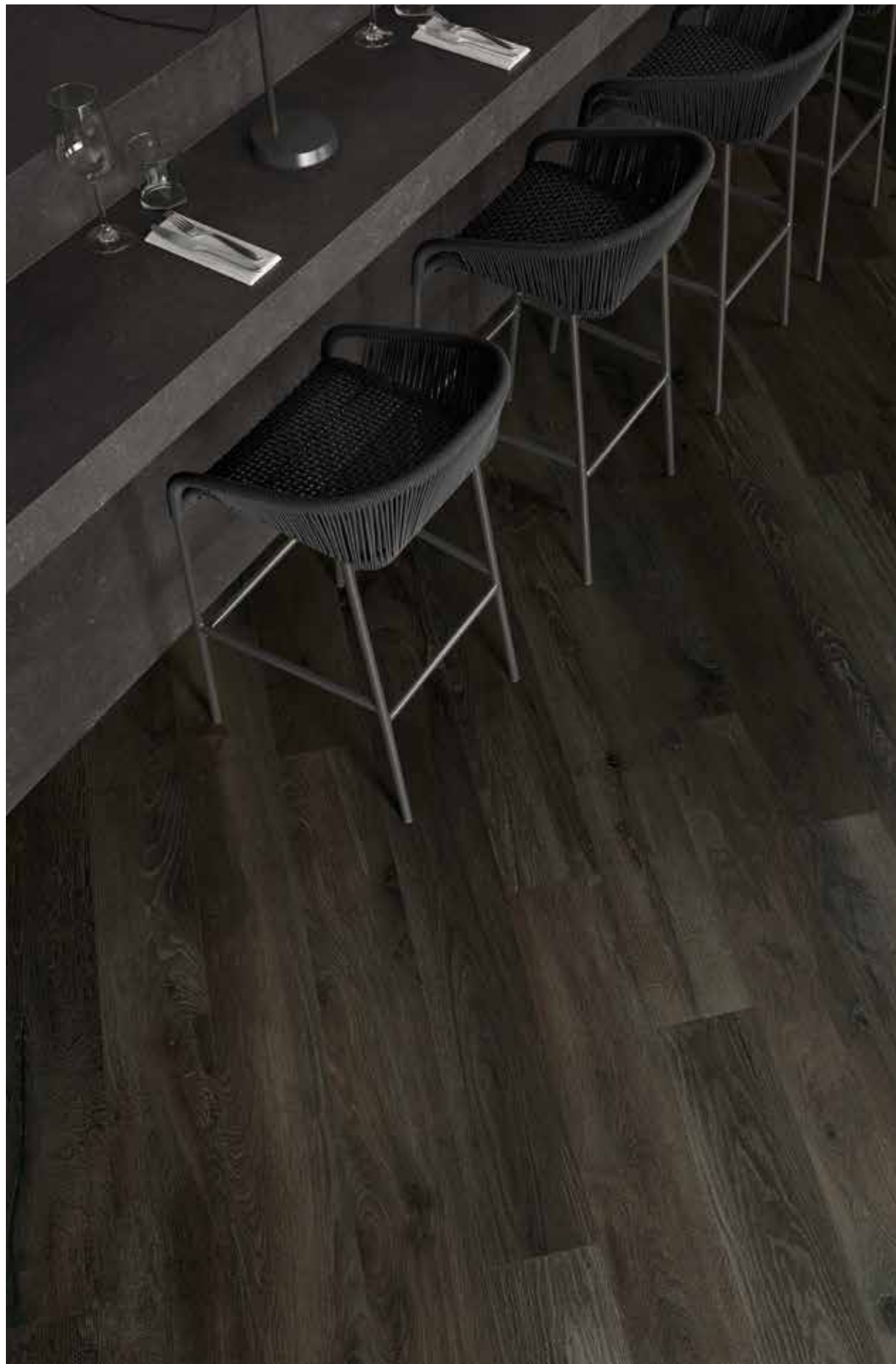


FLOOR CHEVRY MIX DARK 30x30





FLOOR MOGANO 20x180
COUTER CARRIERE DU KRONOS NAMUR



FLOOR MOGANO 20x180
COUTER CARRIERE DU KRONOS NAMUR



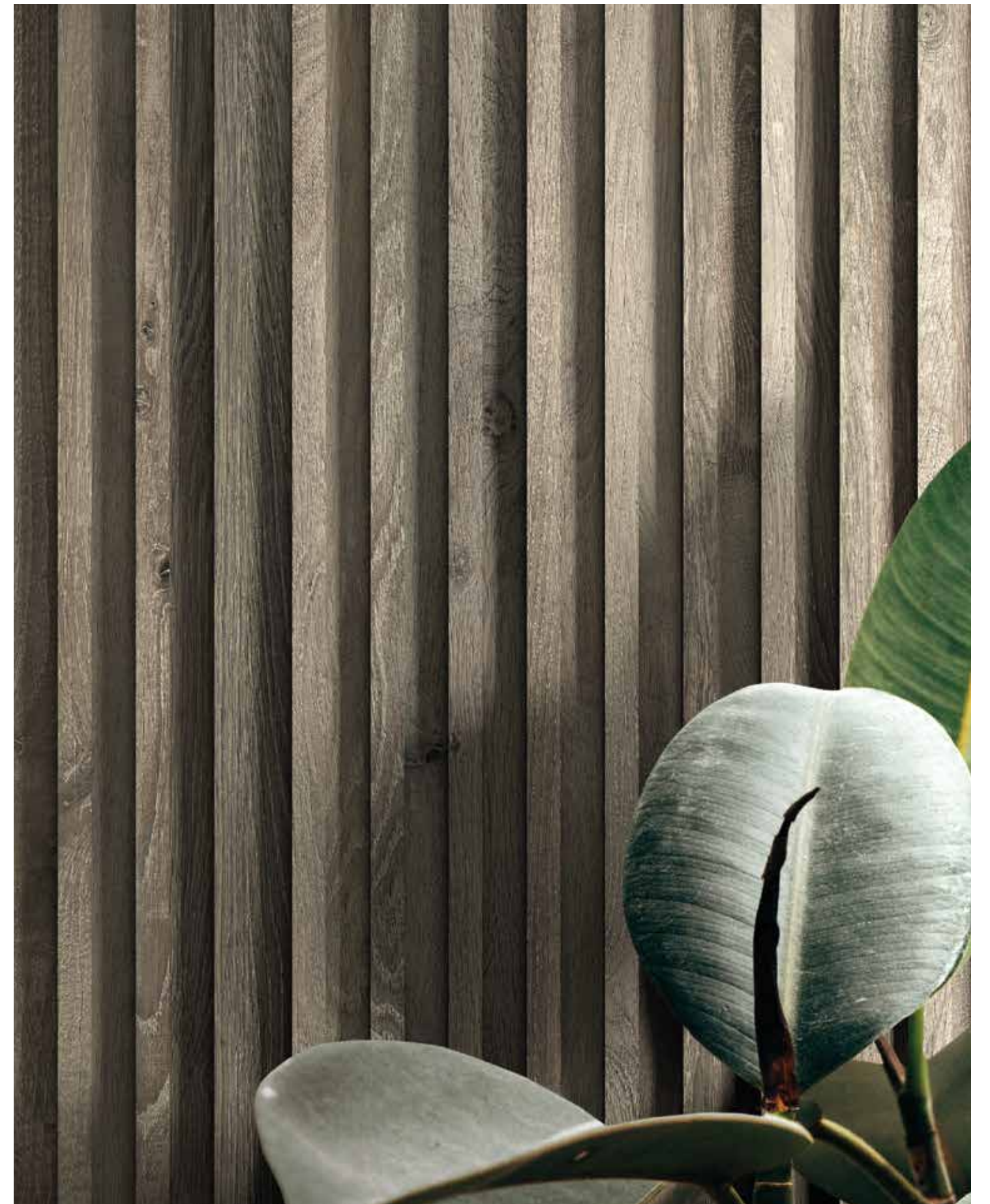


FLOOR MIX DARK CHEVRY 2.0 40x120



BOCOTE

LES BOIS





FLOOR SKE2.0 PRIMA MATERIA CENERE 80x80
WALL BOCOTE BAGUETTE 29x120
SWIMMING POOL EDGE PORFIDO 60x120





FLOOR SKE2.0 PRIMA MATERIA CENERE 80x80
WALL BOCOTE BAGUETTE 29x120





FLOOR BOCOTE 20x120 - 20x180





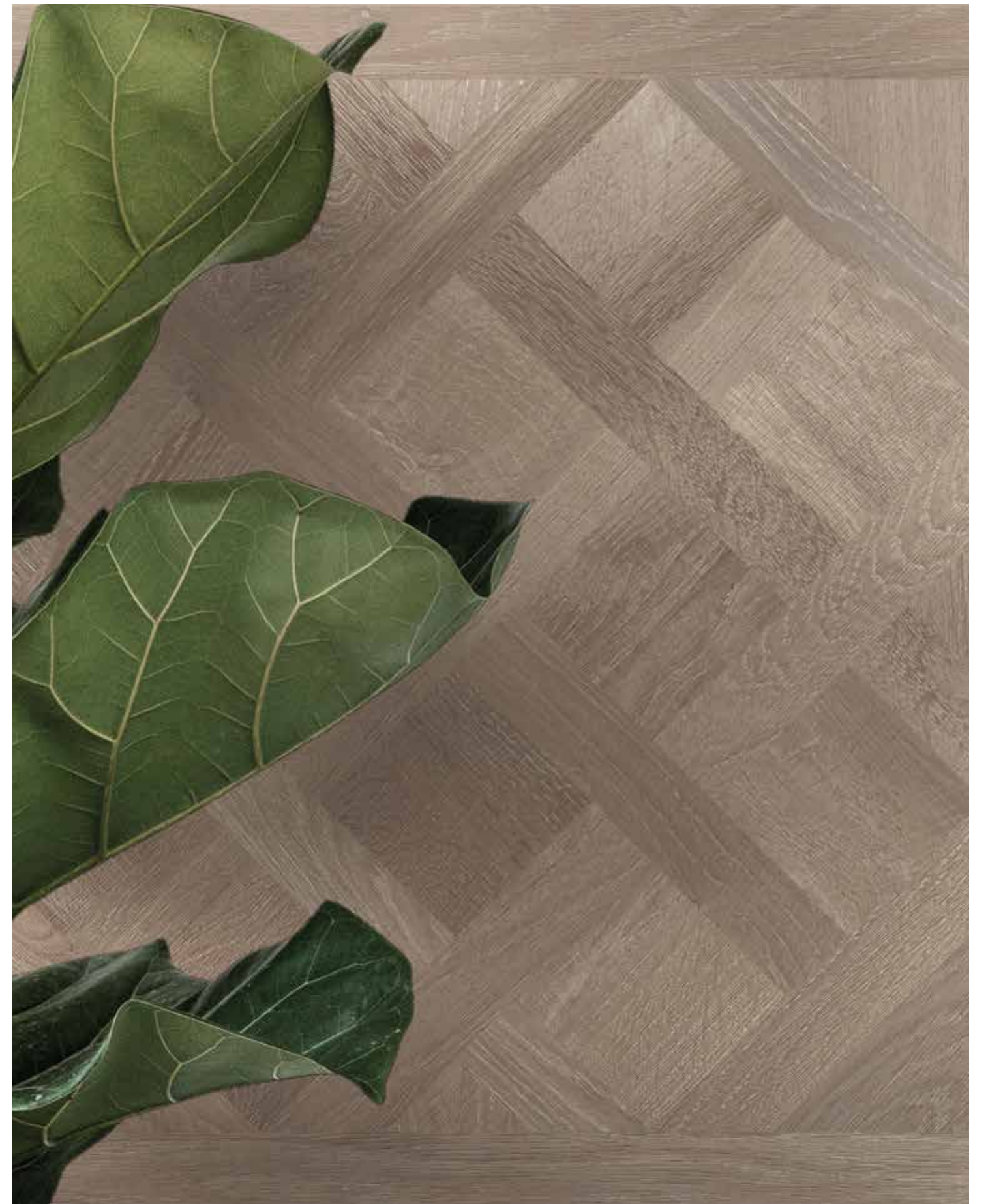
FLOOR BOCOTE 26,5x180
WALL MAXI PRIMA MATERIA CENERE 120x240
BOCOTE MOSAICO 15x120, tessera 2x120



FLOOR BOCOTE 26,5x180
WALL BOCOTE MOSAICO 15x120, tessera 2x120
SHOWER MAXI PRIMA MATERIA CENERE 120x240

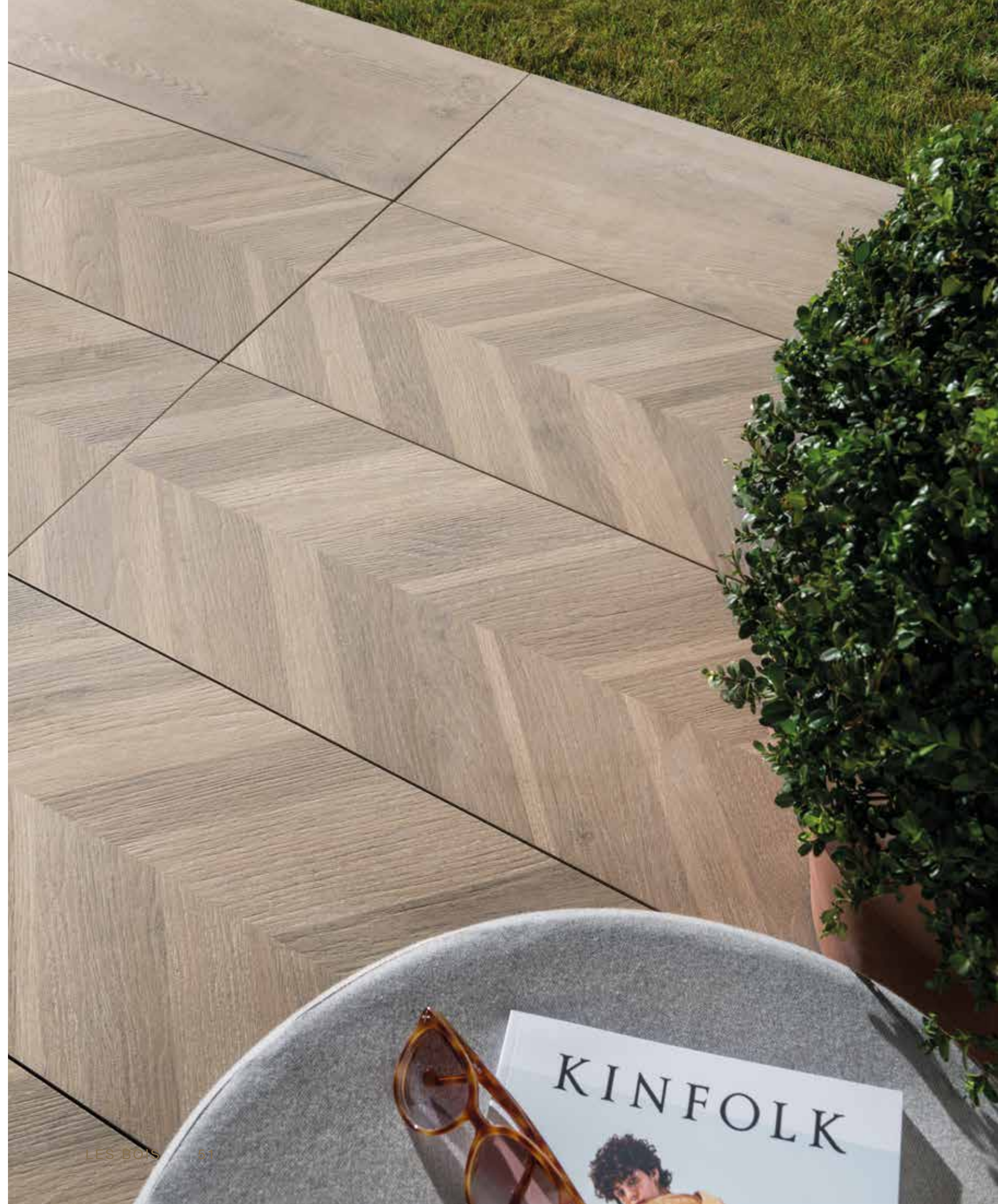
SLAVONIA

LES BOIS





FLOOR SLAVONIA CHEVRY 2.0 40x120





FLOOR SLAVONIA CHEVRY 2.0 40x120



FLOOR SLAVONIA Chevron 9x58,5

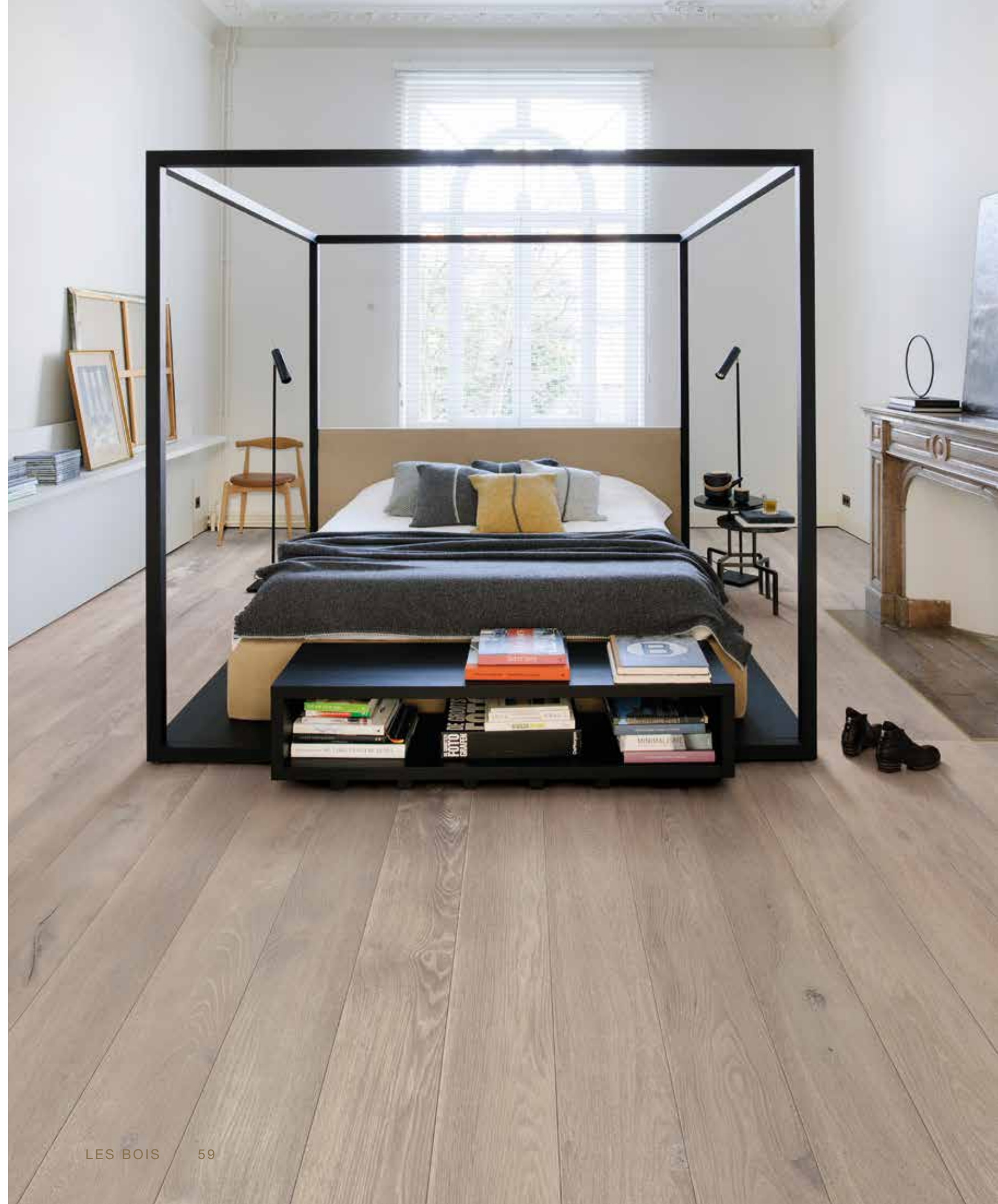




FLOOR SLAVONIA Versailles 80x80

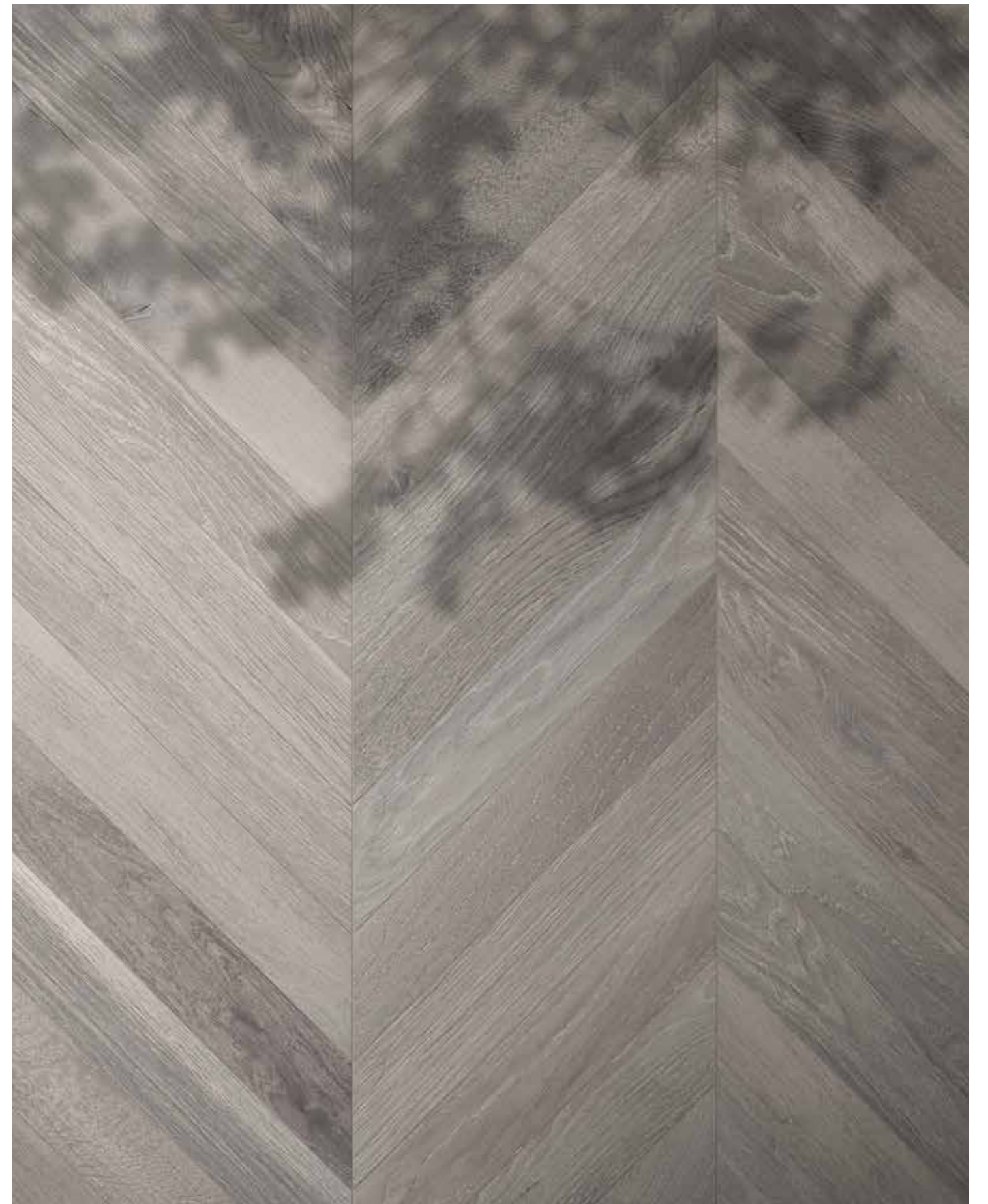


FLOOR SLAVONIA 26,5x180



SARAWA

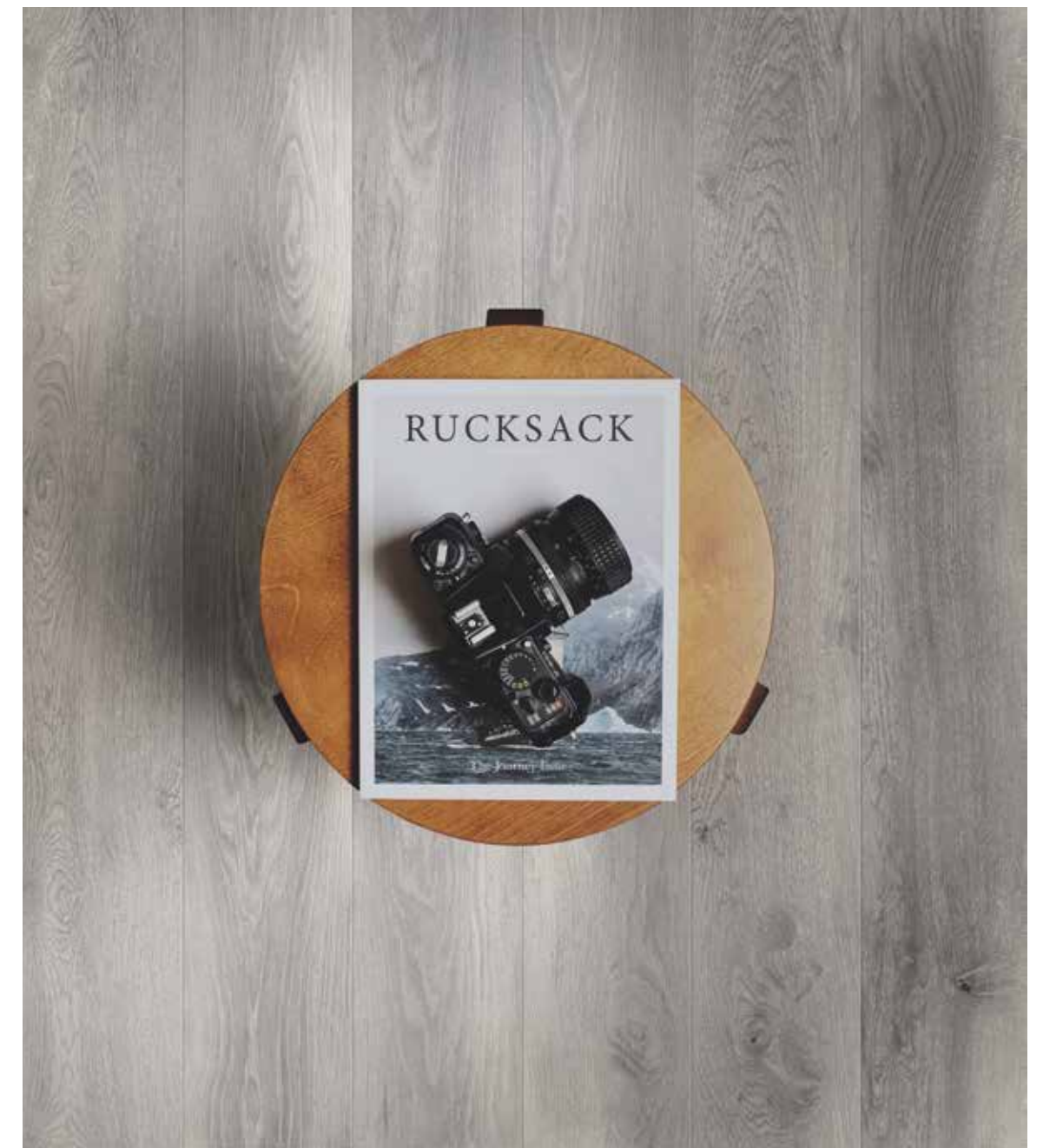
LES BOIS







FLOOR SARAWA 26,5x180





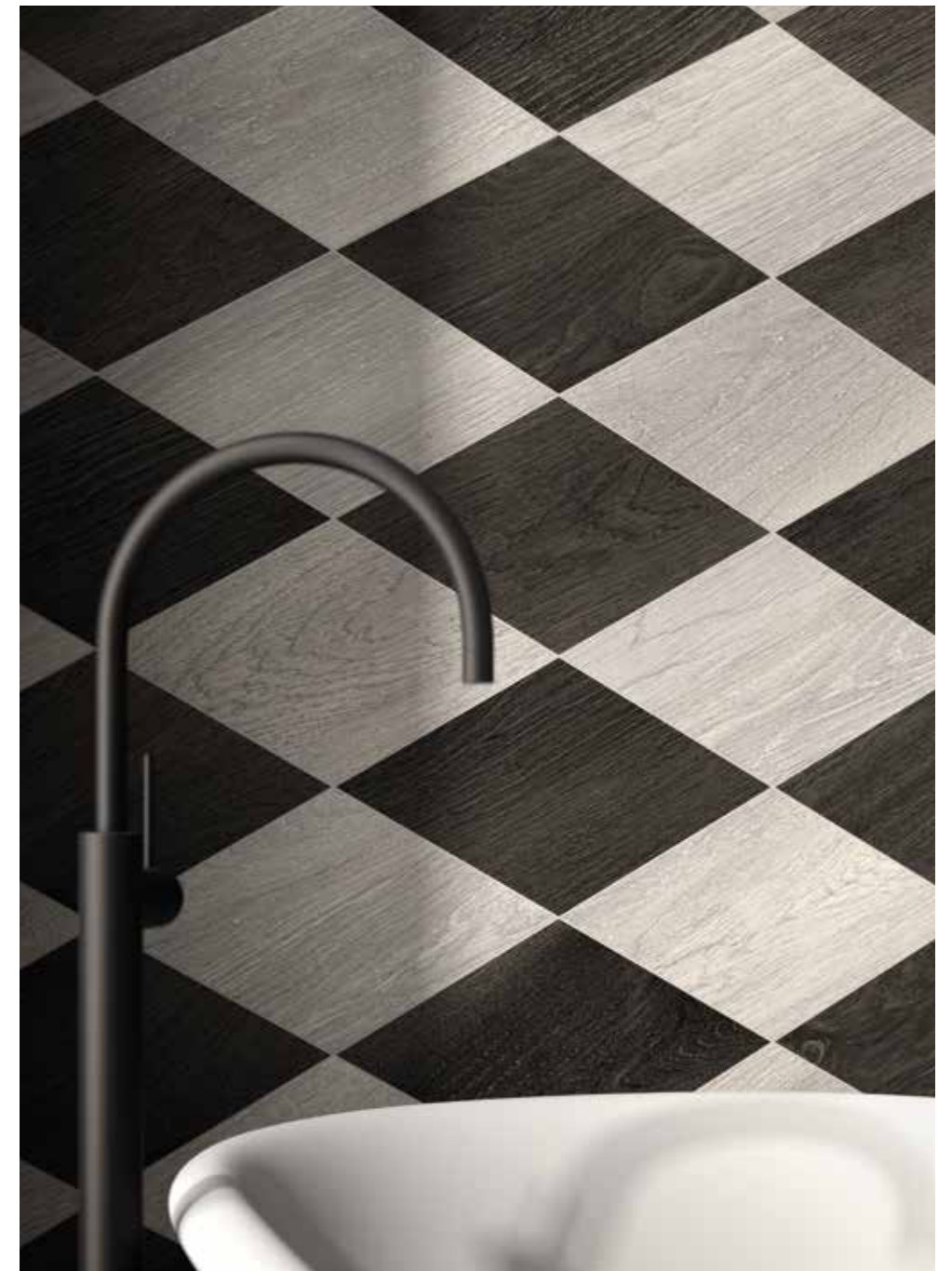
STAIRWAY SARAWA





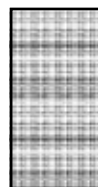
FLOOR SARAWA 20x180
WALL SARAWA 20x120, bacchetta ottone 1x0,8x120
TOP SARAWA 80x180
WASH BASIN PRIMA MATERIA SANDALO
WASH BASIN WALL PRIMA MATERIA SANDALO
SHOWER WALL PRIMA MATERIA SANDALO 120x240
SHOWER TRAY PRIMA MATERIA SANDALO 120x120





FLOOR SARAWA 20x180
WALL SARAWA ROMBO 22,5x39,5 - COBOLO ROMBO 22,5x39,5

LES BOIS



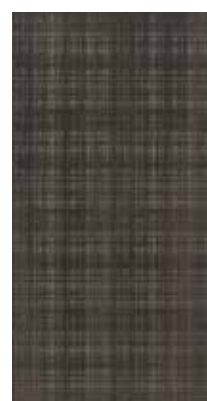
60x120 LOUVRE

SHOWER WALL COBOLO Louvre 60x120

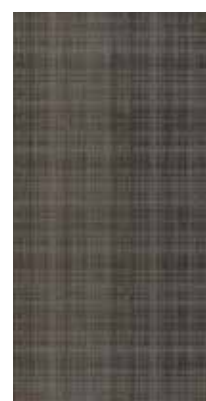


60x120 VILLANDRY

WALL MOGANO Villandry 60x120, BACCHETTA SARAWA 2x120



COBOLO



MOGANO



BOCOTE



SLAVONIA



SARAWA



COBOLO



MOGANO



BOCOTE

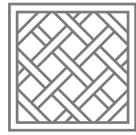


SLAVONIA



SARAWA

LES BOIS



80x80 VERSAILLES

FLOOR BOCOTE Versailles 80x80

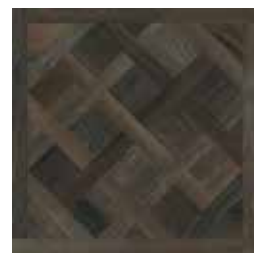


15x120 - 2x120

FLOOR MOSAICO COBOLO 15x120 - tessere 2x120



COBOLO



MOGANO



BOCOTE



SLAVONIA



SARAWA



COBOLO



MOGANO



BOCOTE



SLAVONIA



SARAWA

LES BOIS



29x120 BAGUETTE 3D

WALL SLAVONIA BAGUETTE 29x120
MAXI CARRIERE DU KRONOS BRUGES 120x240



30x30 CHEVRY

WALL SARAWA CHEVRY 30x30
LAVABO DAVE MAXI CARRIERE DU KRONOS NAMUR 6 mm



MO-COBOLO



BOCOTE



SLAVONIA



SARAWA



COBOLO



MOGANO



BOCOTE



SLAVONIA



SARAWA



MIX DARK

LES BOIS



29x59 BATONNET

WALL BATONNET DARK 3D 29x59



MIX DARK

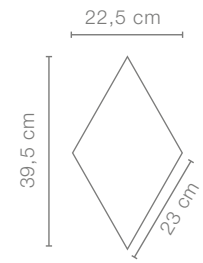
1x0,8x120 BACCHETTA OTTONE

WALL COBOLO 20x120, 60x120
BACCHETTA OTTONE 1x0,8x120



LES BOIS

ROMBO



Disponibile in tutti i colori
Available in all colors:



COBOLO



MOGANO



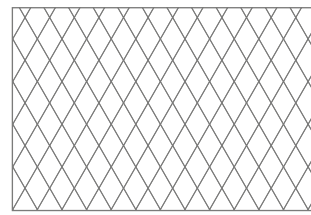
BOCOTE



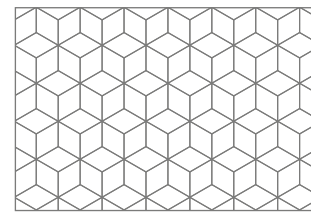
SLAVONIA



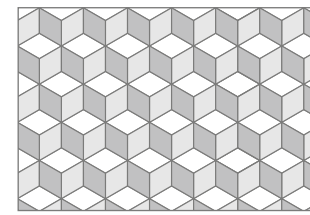
SARAWA



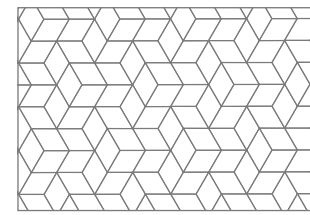
mod. 01 \diamond 100%



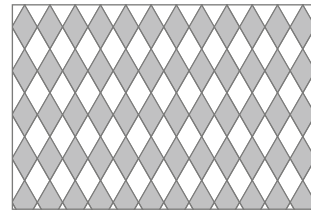
mod. 05 \diamond 100%



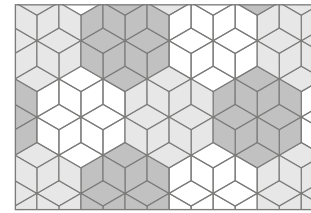
mod. 09 \diamond 33,3%
 \diamond 33,3%
 \diamond 33,3%



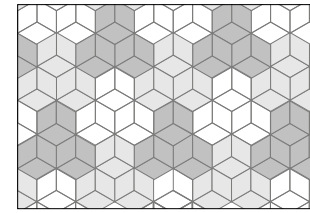
mod. 12 \diamond 100%



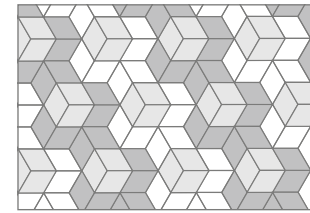
mod. 02 \diamond 50%
 \diamond 50%



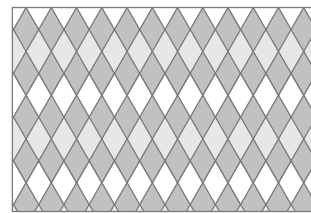
mod. 06 \diamond 33,3%
 \diamond 33,3%
 \diamond 33,3%



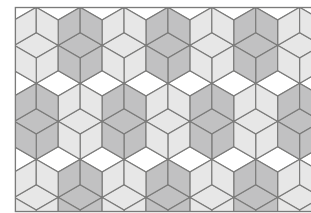
mod. 10 \diamond 33,3%
 \diamond 33,3%
 \diamond 33,3%



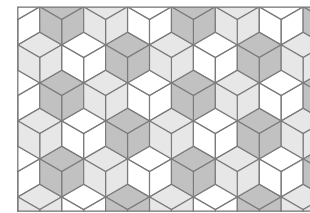
mod. 13 \diamond 33,3%
 \diamond 33,3%
 \diamond 33,3%



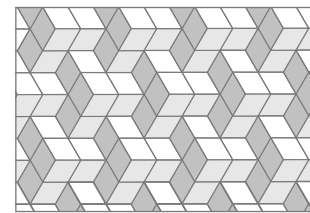
mod. 03 \diamond 25%
 \diamond 25%
 \diamond 50%



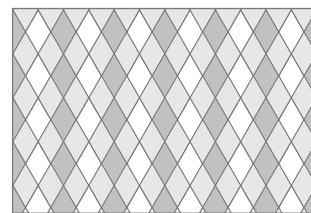
mod. 07 \diamond 16,6%
 \diamond 41,7%
 \diamond 41,7%



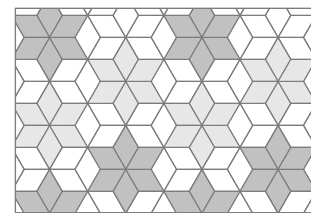
mod. 11 \diamond 33,3%
 \diamond 33,3%
 \diamond 33,3%



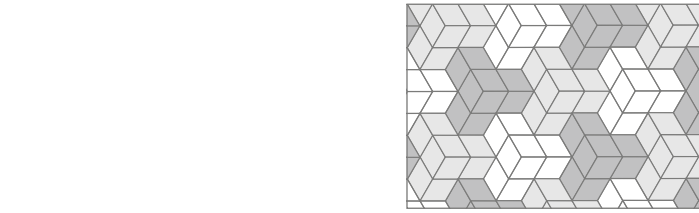
mod. 14 \diamond 33,3%
 \diamond 33,3%
 \diamond 33,3%



mod. 04 \diamond 33,3%
 \diamond 33,3%
 \diamond 33,3%



mod. 08 \diamond 50%
 \diamond 25%
 \diamond 25%



mod. 15 \diamond 33,3%
 \diamond 33,3%
 \diamond 33,3%



WALL ROMBO mod. 02 BOCOTE, MOGANO
TOP MOGANO



mod. 01
 \diamond SLAVONIA
100%



mod. 03
 \diamond SLAVONIA 33,3%
 \diamond BOCOTE 33,3%
 \diamond MOGANO 33,3%



mod. 04
 \diamond SLAVONIA 33,3%
 \diamond BOCOTE 33,3%
 \diamond COBOLO 33,3%

LES BOIS

ROMBO



mod. 05

● MOGANO
100%



mod. 07

● BOCOTE 41,7% ● MOGANO 41,7% ● COBOLO 16,6%



mod. 11

● BOCOTE 33,3% ● MOGANO 33,3% ● COBOLO 33,3%



mod. 12

● SARAWA
100%



mod. 15

● SARAWA 50% ● COBOLO 50%



mod. 13

● SLAVONIA 33,3% ● BOCOTE 33,3% ● COBOLO 33,3%



mod. 08

● SLAVONIA 50% ● BOCOTE 25% ● MOGANO 25%



mod. 09

● SLAVONIA 33,3% ● BOCOTE 33,3% ● MOGANO 33,3%



mod. 10

● SLAVONIA 33,3% ● BOCOTE 33,3% ● COBOLO 33,3%



mod. 12

● BOCOTE
100%



mod. 15

● BOCOTE 33,3% ● MOGANO 33,3% ● COBOLO 33,3%

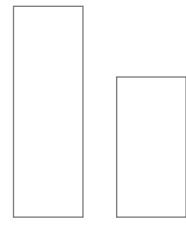


mod. 14

● SLAVONIA 33,3% ● BOCOTE 33,3% ● COBOLO 33,3%

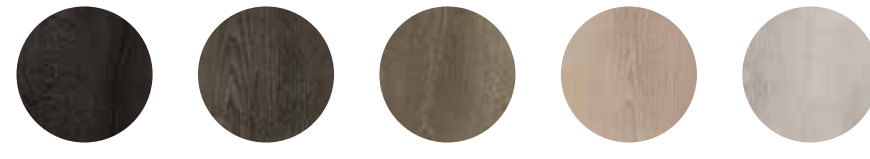
LES BOIS

20x40 - 20x60



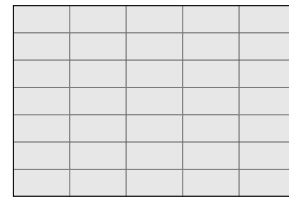
20x60 20x40

Disponibile in tutti i colori
Available in all colors:

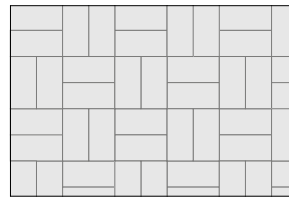


COBOLO MOGANO BOCOTE SLAVONIA SARAWA

20x40

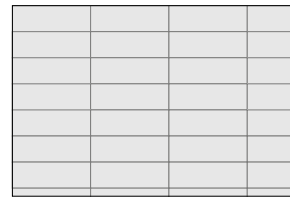


mod. 16
20x40 100%



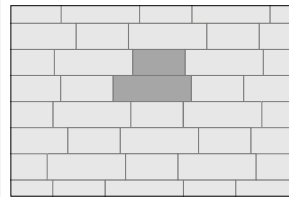
mod. 20
20x40 100%

20x60

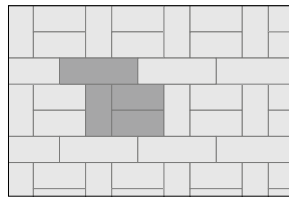


mod. 23
20x60 100%

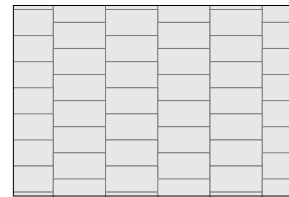
20x40 - 20x60



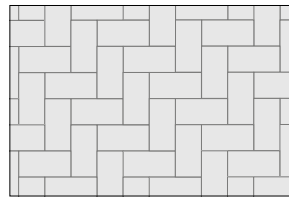
mod. 28
20x40 40% 20x60 60%



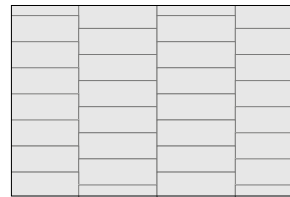
mod. 33
20x40 66,6% 20x60 33,3%



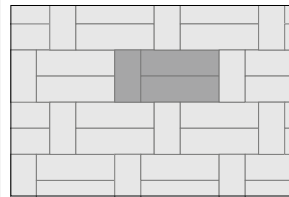
mod. 17
20x40 100%



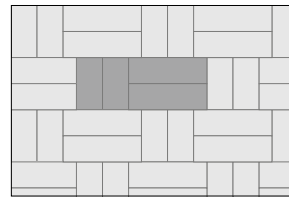
mod. 21
20x40 100%



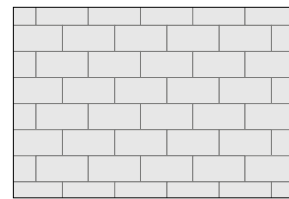
mod. 24
20x60 100%



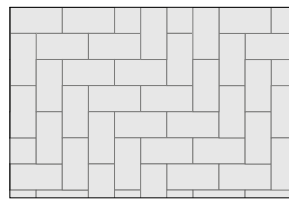
mod. 29
20x40 25% 20x60 75%



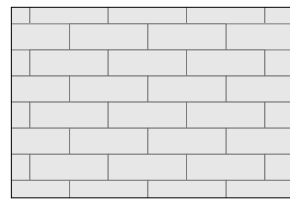
mod. 34
20x40 40% 20x60 60%



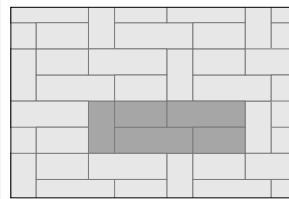
mod. 18
20x40 100%



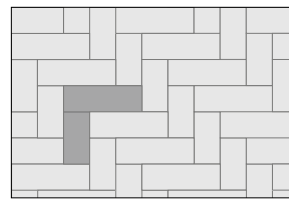
mod. 22
20x40 100%



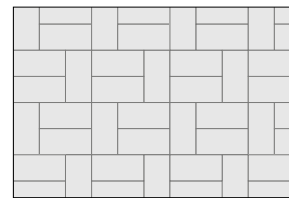
mod. 25
20x60 100%



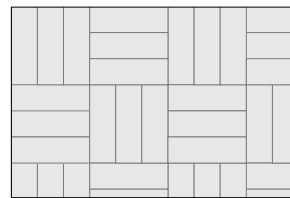
mod. 30
20x40 50% 20x60 50%



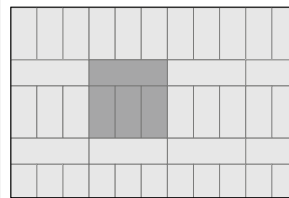
mod. 35
20x40 40% 20x60 60%



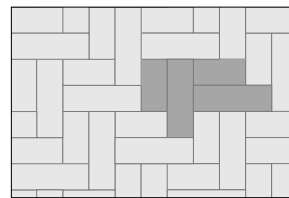
mod. 19
20x40 100%



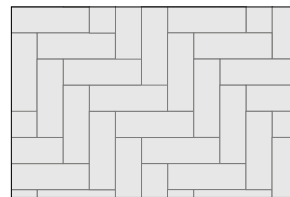
mod. 26
20x60 100%



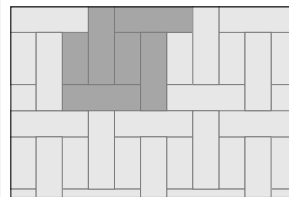
mod. 31
20x40 33,3% 20x60 66,6%



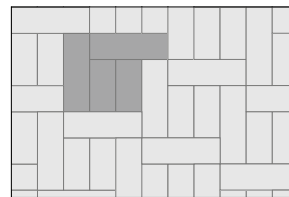
mod. 36
20x40 40% 20x60 60%



mod. 27
20x60 100%



mod. 32
20x40 25% 20x60 75%



mod. 37
20x40 40% 20x60 60%



SHOWER FLOOR SARAWA 20x40
FLOOR MAXI PRIMA MATERIA CEMENTO 120x120

20x40



mod. 16
COBOLO
100%



mod. 17
BOCOTE
100%



mod. 18
SLAVONIA
100%

LES BOIS

20x40 - 20x60

20x60



mod. 23
● COBOLO
100%



mod. 25
● SARAWA
100%



mod. 26
● SLAVONIA
100%

20x40 - 20x60



mod. 28
● COBOLO 20x40 40% ● COBOLO 20x60 60%



mod. 31
● BOCOTE 20x40 33,3% ● BOCOTE 20x60 66,6%



mod. 29
● BOCOTE 25% ● MOGANO 75%



mod. 24
● BOCOTE
100%



mod. 25
● MOGANO
100%



mod. 26
● SLAVONIA 33,3% ● BOCOTE 66,6%



mod. 33
● SLAVONIA 20x40 66,6% ● SLAVONIA 20x60 33,3%



mod. 37
● SARAWA 20x40 40% ● SARAWA 20x60 60%



mod. 34
● SLAVONIA 20x40 40% ● MOGANO 20x60 60%

LES BOIS

COBOLO



LB005 COBOLO rett
80x180 - 31½"x70¾"



LB010 COBOLO rett
26,5x180 - 10½"x70¾"



LB015 COBOLO rett
20x180 - 7"x70¾"



LB020 COBOLO rett
LB025 COBOLO grip
20x120 - 7"x47½"



LB030 COBOLO rett
LB075 COBOLO grip
60x120 - 23½"x47½"



LB060 CHEVRON COBOLO rett
9x58,5 - 3.5"x23"



LB114 COBOLO rett
20x60 - 7"x23½"



LB119 COBOLO rett
20x40 - 7"x15¾"



LB124 C. ROMBO rett
22,5x39,5 - 8.8"x15.5"



LB055 OTTONE bacchetta rett
1x0,8x120 - 0.4"x0.3"x47½"



LB100 CHEVRY COBOLO mos.
30x30 - 11¾"x11¾"



LB101 CHEVRY MIX DARK mos.
30x30 - 11¾"x11¾"



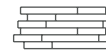
LB080 COBOLO batt.
4,6x60 - 1.8"x23½"



LB095 COBOLO mos. rett
15x120 - 6"x47½" / 2x120 - 0.8"x47½"



LB049 BAGUETTE 3D MO-COB. rett
29x120 - 11¾"x47½"



LB051 BATONNET DARK 3D rett
29x59 - 11¾"x23½"



LB065 LOUVRE COBOLO rett
60x120 - 23½"x47½"



LB070 VILLANDRY COB. rett
60x120 - 23½"x47½"



LB040 VERSAILLES COB. rett
80x80 - 31½"x31½"

LES BOIS

MOGANO



LB004 MOGANO rett
80x180 - 31½"x70¾"



LB009 MOGANO rett
26,5x180 - 10½"x70¾"



LB014 MOGANO rett
20x180 - 7"x70¾"



LB019 MOGANO rett
LB024 MOGANO grip
20x120 - 7"x47½"



LB029 MOGANO rett
LB074 MOGANO grip
60x120 - 23½"x47½"



LB059 CHEVRON MOGANO rett
9x58,5 - 3.5"x23"



LB113 MOGANO rett
20x60 - 7"x23½"



LB118 MOGANO rett
20x40 - 7"x15¾"



LB123 M. ROMBO rett
22,5x39,5 - 8.8"x15.5"



LB055 OTTONE bacchetta rett
1x0,8x120 - 0.4"x0.3"x47½"



LB099 CHEVRY MOGANO mos.
30x30 - 11¾"x11¾"



LB101 CHEVRY MIX DARK mos.
30x30 - 11¾"x11¾"



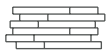
LB079 MOGANO batt.
4,6x60 - 1.8"x23½"



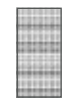
LB094 MOGANO mos. rett
15x120 - 6"x47½" / 2x120 - 0.8"x47½"



LB049 BAGUETTE 3D MO-COB. rett
29x120 - 11¾"x47½"



LB051 BATONNET DARK 3D rett
29x59 - 11¾"x23½"



LB064 LOUVRE MOGANO rett
60x120 - 23½"x47½"



LB069 VILLANDRY MOGANO rett
60x120 - 23½"x47½"



LB039 VERSAILLES MOGANO rett
80x80 - 31½"x31½"

LES BOIS

BOCOTE



LB003 BOCOTE rett
80x180 - 31½"x70¾"



LB008 BOCOTE rett
26,5x180 - 10½"x70¾"



LB013 BOCOTE rett
20x180 - 7¾"x70¾"



LB018 BOCOTE rett
LB023 BOCOTE grip
20x120 - 7¾"x47½"



LB028 BOCOTE rett
LB073 BOCOTE grip
60x120 - 23¾"x47½"



LB058 CHEVRON BOCOTE rett
9x58,5 - 3.5"x23"



LB112 BOCOTE rett
20x60 - 7¾"x23¾"



LB117 BOCOTE rett
20x40 - 7¾"x15¾"



LB122 B. ROMBO rett
22,5x39,5 - 8.8"x15.5"



LB055 OTTONE bacchetta rett
1x0,8x120 - 0.4"x0.3"x47½"



LB098 CHEVRY BOCOTE mos.
30x30 - 11¾"x11¾"



LB101 CHEVRY MIX DARK mos.
30x30 - 11¾"x11¾"



LB078 BOCOTE batt.
4,6x60 - 1.8"x23¾"



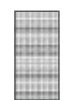
LB093 BOCOTE mos. rett
15x120 - 6"x47½" / 2x120 - 0.8"x47½"



LB048 BAGUETTE 3D BOCOTE rett
29x120 - 11¾"x47½"



LB051 BATONNET DARK 3D rett
29x59 - 11¾"x23¾"



LB063 LOUVRE BOCOTE rett
60x120 - 23¾"x47½"



LB068 VILLANDRY BOCOTE rett
60x120 - 23¾"x47½"



LB038 VERSAILLES BOCOTE rett
80x80 - 31½"x31½"

LES BOIS

SLAVONIA



LB001 SLAVONIA rett
80x180 - 31½"x70¾"



LB006 SLAVONIA rett
26,5x180 - 10½"x70¾"



LB011 SLAVONIA rett
20x180 - 7¾"x70¾"



LB016 SLAVONIA rett
LB021 SLAVONIA grip
20x120 - 7¾"x47½"



LB026 SLAVONIA rett
LB071 SLAVONIA grip
60x120 - 23¾"x47½"



LB056 CHEVRON SLAVONIA rett
9x58,5 - 3.5"x23"



LB110 SLAVONIA rett
20x60 - 7¾"x23¾"



LB115 SLAVONIA rett
20x40 - 7¾"x15¾"



LB120 S. ROMBO rett
22,5x39,5 - 8.8"x15.5"



LB055 OTTONE bacchetta rett
1x0,8x120 - 0.4"x0.3"x47½"



LB096 CHEVRY SLAVONIA mos.
80x80 - 31½"x31½"



LB076 SLAVONIA batt.
4,6x60 - 1.8"x23¾"



LB091 SLAVONIA mos. rett
15x120 - 6"x47½" / 2x120 - 0.8"x47½"



LB046 BAGUETTE 3D SLAVONIA rett
29x120 - 11¾"x47½"



LB051 BATONNET DARK 3D rett
29x59 - 11¾"x23¾"



LB061 LOUVRE SLAVONIA rett
60x120 - 23¾"x47½"



LB066 VILLANDRY SLAVONIA rett
60x120 - 23¾"x47½"



LB036 VERSAILLES SLAVONIA rett
80x80 - 31½"x31½"

LES BOIS

SARAWA



LB002 SARAWE rett
80x180 - 31½"x70¾"



LB007 SARAWE rett
26,5x180 - 10½"x70¾"



LB012 SARAWE rett
20x180 - 7"x70¾"



LB017 SARAWE rett
LB022 SARAWE grip
20x120 - 7"x47½"



LB027 SARAWE rett
LB072 SARAWE grip
60x120 - 23½"x47½"



LB057 CHEVRON SARAWE rett
9x58,5 - 3.5"x23"



LB111 SARAWE rett
20x60 - 7"x23½"



LB116 SARAWE rett
20x40 - 7"x15¾"



LB121 S. ROMBO rett
22,5x39,5 - 8.8"x15.5"



LB055 OTTONE bacchetta rett
1x0,8x120 - 0.4"x0.3"x47½"



LB097 CHEVRY SARAWE mos.
30x30 - 11¾"x11¾"



LB077 SARAWE batt.
4,6x60 - 1.8"x23½"



LB092 SARAWE mos. rett
15x120 - 6"x47½" / 2x120 - 0.8"x47½"



LB047 BAGUETTE 3D SARAWE rett
29x120 - 11¾"x47½"



LB051 BATONNET DARK 3D rett
29x59 - 11¾"x23½"



LB062 LOUVRE SARAWE rett
60x120 - 23½"x47½"



LB067 VILLANDRY SARAWE rett
60x120 - 23½"x47½"



LB037 VERSAILLES SARAWE rett
80x80 - 31½"x31½"

LES BOIS

2 CM



8048 SLAVONIA 2.0 rett
80x180 - 31½"x70¾"



8058 SLAVONIA 2.0 rett
26,5x180 - 10½"x70¾"



LB126 SLAVONIA 2.0 rett
20x120 - 7"x47½"



LB081 SLAVONIA 2.0 rett
40x120 - 15¾"x47½"



LB086 SL. CHEVRY 2.0 rett
40x120 - 15¾"x47½"



8049 SARAWE 2.0 rett
80x180 - 31½"x70¾"



8056 SARAWE 2.0 rett
26,5x180 - 10½"x70¾"



LB127 SARAWE 2.0 rett
20x120 - 7"x47½"



LB082 SARAWE 2.0 rett
40x120 - 15¾"x47½"



LB087 SA. CHEVRY 2.0 rett
40x120 - 15¾"x47½"



LB128 BOCOTE 2.0 rett
20x120 - 7"x47½"



LB083 BOCOTE 2.0 rett
40x120 - 15¾"x47½"



LB129 MOGANO 2.0 rett
20x120 - 7"x47½"



LB084 MOGANO 2.0 rett
40x120 - 15¾"x47½"



LB130 COBOLO 2.0 rett
20x120 - 7"x47½"



LB085 COBOLO 2.0 rett
40x120 - 15¾"x47½"

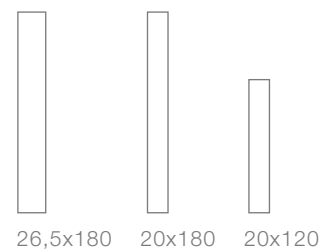


LB088 MIX DARK CHEVRY 2.0 rett
40x120 - 15¾"x47½"

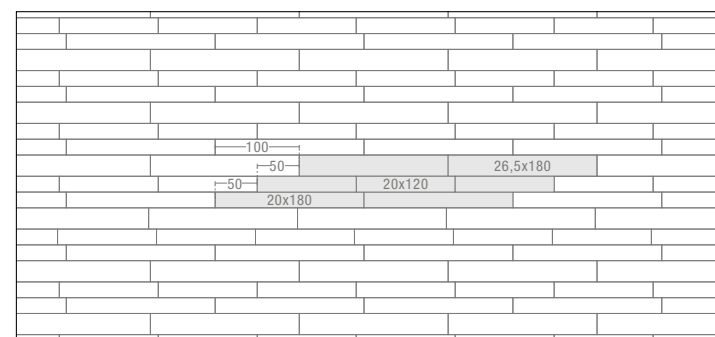
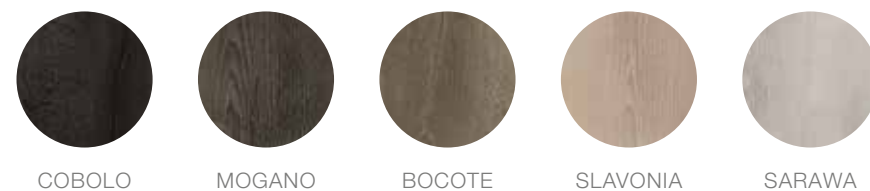


LES BOIS

26,5x180 - 20x180 - 20x120

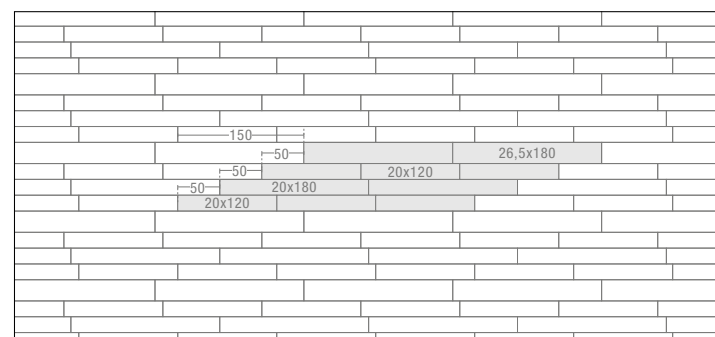


Disponibile in tutti i colori
Available in all colors:



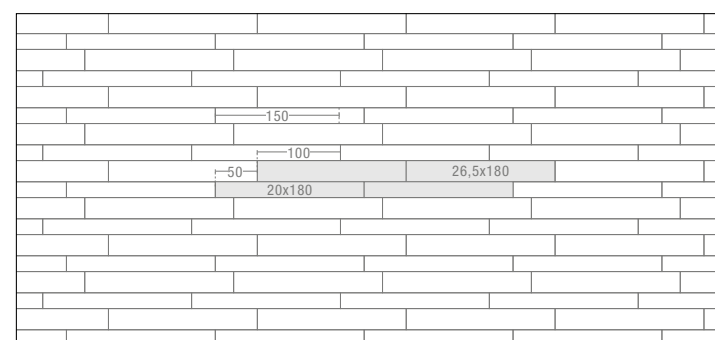
mod. I

- Nr. 2 26,5x180 39,8%
- Nr. 2 20x180 30,1%
- Nr. 3 20x120 30,1%



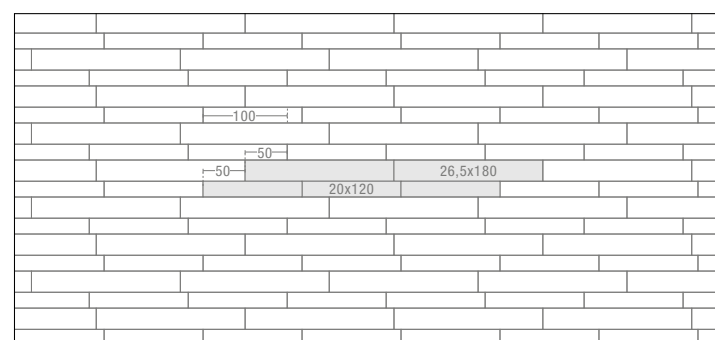
mod. L

- Nr. 2 26,5x180 30,6%
- Nr. 2 20x180 23,2%
- Nr. 6 20x120 46,2%



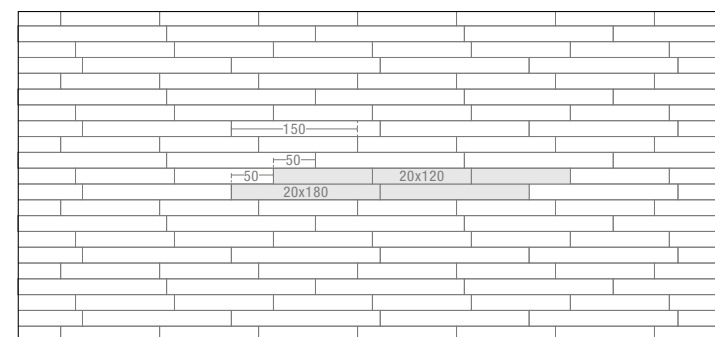
mod. M

- Nr. 2 26,5x180 57%
- Nr. 2 20x180 43%



mod. N

- Nr. 2 26,5x180 57%
- Nr. 3 20x120 43%



mod. O

- Nr. 2 20x180 50%
- Nr. 3 20x120 50%

LES BOIS

STUCCHI

PLASTERS

COBOLO
MOGANO

MAPEI 120

BOCOTE

MAPEI 114


SLAVONIA
SARAWA

MAPEI 113

INFORMAZIONI TECNICHE

TECNICAL DATA

LES BOIS	Thickness	Pezzi per scatola	M ² per scatola	Kg per scatola	Scatole per pallet	M ² per pallet	KG per pallet
80x180	10 mm	2	2,88	67,00	20	57,60	1.360
26,5x180	10 mm	3	1,44	33,00	42	60,48	1.481,60
20x180	10 mm	4	1,44	33,00	40	57,60	1.404
20x120	10 mm	6	1,44	31,90	24	34,56	785,60
60x120	10 mm	2	1,44	33,50	30	43,20	1.025
CHEVRON 9x58,5	10 mm	14	0,63	14,50	48	30,24	716
ROMBO	10 mm	24	0,96	22,00	33	31,68	746
20x60	10 mm	8	0,96	22,00	48	46,08	1.076
20x40	10 mm	12	0,96	22,00	48	46,08	1.076
VERSAILLES 80x80	10 mm	2	1,28	30,00	40	51,20	1.220
BAGUETTE 3D 29x120	-	2	0,70	16,00	20	14,00	340
BATONNET 3D	-	4	0,70	17,00	24	16,80	428
LOUVRE 60x120	10 mm	2	1,44	33,50	-	-	-
VILLANDRY 60x120	10 mm	2	1,44	33,50	-	-	-
MOSAICO 15x120	10 mm	6	1,08	23,00	30	32,40	710
CHEVRY 30x30	10 mm	10	0,90	20,00	48	43,20	980
80x180	20 mm	1	1,44	67,00	20	28,80	1.360
26,5x180	20 mm	2	0,96	44,00	30	28,80	1.340
20x120	20 mm	3	0,72	32,00	24	17,28	788
40x120	20 mm	2	0,96	44,20	24	23,04	1.080,8
40x120 chevy	20 mm	2	0,96	44,20	24	23,04	1.080,8

CARATTERISTICHE E PROPRIETÀ CHARACTERISTICS OR PROPERTIES CARACTÉRISTIQUES OU PROPRIÉTÉS EIGENSCHAFTEN UND GÜTEMERKMALE	NORME STANDARDS NORMES NORMEN	SECONDO LE NORME COMPLIANCE WITH STANDARDS CONFORME AUX NORMES ENTSPRECHEND DEN NORMEN UNI EN 14411 G			
QUALITÀ DELLA SUPERFICIE - SURFACE QUALITY - QUALITÉ DE LA SURFACE - OBERFLÄCHENQUALITÄT	ISO 10545-2	IL 95% MIN DELLE PISTRELLE DEVE ESSERE ESENTA DA DIFETTI VISIBILI / AT LEAST 95% OF THE TILES MUST BE FREE FROM VISIBLE FLAWS / 95% MIN DES CARREUX NE DOIVENT PRÉSENTER AUCUN DÉFAUT VISIBLE / MINDESTENS 95% DER FLIESEN MÜSSEN FREI VON SICHTBAREN	CONFORME ALLE NORME - COMPLIES WITH STANDARD - CONFORME AUX NORMES - NORMGERECHT		
		N ≥ 15cm %	N ≥ 15cm mm	RISULTATI TEST TEST RESULTS RESULTÉS DES ESSAIS PRÜFERGEBNIS	CONFORME ALLE NORME COMPLIES WITH STANDARD CONFORME AUX NORMES - NORMGERECHT
DEVIAZIONE MASSIMA DI RETTILINEITÀ IN % - MAXIMUM STRAIGHTNESS DEVIATION IN % - MARGE DE TOLÉRANCE DE RECTITUDE EN % - ZULAESSIGE HOECHSTABWEICHUNG DER KANTENGERADHEIT IN PROZENTEN		± 0,5 %	± 1,5 mm	± 0,10%	CONFORME ALLE NORME COMPLIES WITH STANDARD CONFORME AUX NORMES - NORMGERECHT
DEVIAZIONE AMMISSIBILE IN %, DELLO SPESSORE MEDIO DI OGNI PIASTRELLA DALLA DIMENSIONE DI FABBRICAZIONE - ADMITTED DEVIATION, IN %, OF THE AVERAGE THICKNESS OF EACH TILE FROM THE PRODUCTION DIMENSIONS - MARGE DE TOLÉRANCE, EN POURCENTAGE, ENTRE L'ÉPAISSEUR MOYENNE DE CHAQUE CARREAU ET LA DIMENSION DE FABRICATION - ZULÄSSIGE ABWEICHUNG DER DURCHSCHNITTSDICKE JEDER FLIESE VOM HERSTELLMASS IN PROZENTEN		± 0,5 %	± 0,5 mm	± 5%	CONFORME ALLE NORME COMPLIES WITH STANDARD CONFORME AUX NORMES - NORMGERECHT
DEVIAZIONE MASSIMA DI ORTOGONALITÀ IN % - MAXIMUM RIGHT-ANGLE DEVIATION IN % - MARGE DE TOLÉRANCE D'ANGULARITÉ IN % - HOECHSTABWEICHUNG DER RECHTWINKLIGKEIT IN PROZENTEN		± 0,5 %	± 2,0 mm	± 0,20%	CONFORME ALLE NORME COMPLIES WITH STANDARD CONFORME AUX NORMES - NORMGERECHT
PLANARITÀ - FLATNESS - PLANÉITÉ - EBENFLÄCHIGKEIT		± 0,5 %	± 2,0 mm	± 0,35%	CONFORME ALLE NORME COMPLIES WITH STANDARD CONFORME AUX NORMES - NORMGERECHT
LUNGHEZZA E LARGHEZZA - LENGTH AND WIDTH LONGUEUR ET LARGEUR - LÄNGE UND BREITE	± 0,6 %	± 2,0 mm	± 0,15%	CONFORME ALLE NORME COMPLIES WITH STANDARD CONFORME AUX NORMES - NORMGERECHT	
ASSORBIMENTO D'ACQUA - WATER ABSORPTION ABSORPTION D'EAU - WASSERAUFNAHME	ISO 10545-3	≤ 0,5 %	E ≤ 0,04 %		
RESISTENZA ALLA FLESSIONE - BENDING STRENGTH RÉSISTANCE À LA FLEXION - BIEGEZUGFESTIGKEIT	ISO 10545-4	R ≥ 35 N/mm²	53 N/mm²		
RESISTENZA ALL'URTO - IMPACT RESISTANCE RÉSISTANCE AUX CHOCs - SCHLAGFESTIGKEIT	ISO 10545-5	VALORE DICHIARATO - DECLARED VALUE - VALEUR DÉCLARÉE - ANGEGBENER WERT	0,88		
RESISTENZA ALL'ABRASIONE PROFONDA - RESISTANCE TO DEEP ABRASION RÉSISTANCE À L'ABRASION PROFONDE - WINDERSTÄNDSFAKKGKEIT GEGEN TIEFENABRIEB	ISO 10545-6	≤175 mm³	<128 mm³		
COEFF. DI DILATAZIONE TERMICA LINEARE - COEFFICIENT OF LINEAR THERMAL-EXPANSION - COEFF. D'EXTENSION THERMIQUE LINEAIRE - LINEAR WÄRMEAUSDEHNUNGS-KOEFFIZIENT	ISO 10545-8	-	α=7x10 ⁻⁶ /°C ⁻¹		
RESISTENZA AGLI SBALZI TERMICI - THERMAL SHOCK RESISTANCE RÉSISTANCE AUX ÉCARTS THERMIQUES - TEMPERATURWECHSELBESTÄNDIGKEIT	ISO 10545-9	TEST SUPERATO SECONDO EN ISO 10545-1 - PASS ACCORDING EN ISO 10545-1 - TEST OBTENUS SELON EN ISO 10545-1 - TEST LAUT EN ISO 10545-1 BESTANDEN	NESSUN DANNO - NO DAMAGE - AUCUN DOMMAGE - KEIN SCHADEN		
RESISTENZA AL GELO - FROST RESISTANCE RÉSISTANCE AU GEL - FROSTBESTÄNDIGKEIT	ISO 10545-12	TEST SUPERATO SECONDO EN ISO 10545-1 - PASS ACCORDING EN ISO 10545-1 - TEST OBTENUS SELON EN ISO 10545-1 - TEST LAUT EN ISO 10545-1 BESTANDEN	NESSUN DANNO - NO DAMAGE - AUCUN DOMMAGE - KEIN SCHADEN		
RESISTENZA AGLI AGENTI CHIMICI - CHEMICAL RESISTANCE RÉSISTANCE À L'ATTAQUE CHIMIQUE - BÄSTÄNDIGKEIT GEGEN CHEMIKALIEN	ISO 10545-13	UB MIN.	UA ULA UHA		
RESISTENZA ALLE MACCHIE - RESISTANCE TO STAIN RÉSISTANCE AUX TACHES - FLECKENFESTIGKEIT	ISO 10545-14	VALORE DICHIARATO - DECLARED VALUE VALEUR DÉCLARÉE - ANGEGBENER WERT	Classe 5		
RESISTENZA AL FUOCO - FIRE RESISTANCE RÉSISTANCE AU FEU - FEUERWIDERSTAND	EN 13501 - 1	VALORE DICHIARATO - DECLARED VALUE VALEUR DÉCLARÉE - ANGEGBENER WERT	CLASSE A1 - A1 FL		
RESISTENZA ALLO SCIVOLAMENTO - SLIP RESISTANCE RÉSISTANCE AU GLISSEMENT - BESTIMMUNG DER RUSTCHEMMENDE EIGENSCHAFT			NAT	GRIP	SKE2.0
	B.C.R. C.A. B.C.R. G.B D. M. 236 DEL 4.6 1989	> 0,40	CONF	CONF	CONF
	ASTM C 1028/07 BOT 3000	Dry SCOF > 0,60	CONF	CONF	CONF
	ASTM C 1028/07 BOT 3000	Wet SCOF > 0,60	CONF	CONF	CONF
	ANSI A137.1 BOT 3000	Wet DCOF > 0,42	CONF	CONF	CONF
	DIN 51130	-	R10	R11	R11
	DIN 51097	-	A	A+B+C	A+B+C
	ENV 12633	≥ CL 1	CONF	CONF	CONF
	UNI EN 13036 - 4 2011	≥ 36	CONF	CONF	CONF
STABILITÀ DEI COLORI ALLA LUCE E AI RAGGI U.V. COLOUR STABILITY ON EXPOSURE TO LIGHT AND UV RAYS STABILITÉ DES COULEURS À LA LUMIÈRE ET AUX RAYONS U.V. FARBECHTHEIT UNTER LICHTEINLUSS UND UV-STRAHLUNG	DIN 51094	VALORE DICHIARATO - DECLARED VALUE - VALEUR DÉCLARÉE - ANGEGBENER WERT	CONFORME ALLE NORME, NO VARIAZIONI COMPLIES WITH STANDARD, NO VARIATION CONFORME AUX NORMES, PAS DE CHANGEMENTS NORMGERECHT, KEINE ÄNDERUNG		
SKE2.0					
CARICO STATICO - STATIC LOAD CHARGE STATIQUE - STATISCHER BELASTUNG	EN 12825	VALORE DICHIARATO - DECLARED VALUE - VALEUR DÉCLARÉE - ANGEGBENER WERT	CENTRO - CENTRE 9,6 KN CENTRO LATO CENTRE POINT OF SIDES 6,5 KN DIAGONALE - DIAGONAL 8,19 KN (CLASSE 3)		
CARICO DINAMICO, PROVA DI URTO DI CORPI DURI - DYMANIC LAOD CAPACITY, HAND OBJECT IMPACT TEST C. STATIQUE, ESSAI DE CHOC DE CORPS DURS - STATISCHER BELASTUNG, AUSWIRKUNGEN TEST DER HARTEN KÖRPER	EN 12825	VALORE DICHIARATO - DECLARED VALUE - VALEUR DÉCLARÉE - ANGEGBENER WERT	TEST NON SUPERATO - TEST NOT PASSED TEST A ÉCHOUÉ - TEST FEHLGESCHLAGEN		
CARICO DINAMICO, PROVA DI URTO DI CORPI MORBIDI - DYMANIC LAOD CAPACITY, SOFT OBJECT IMPACT TEST C. STATIQUE, ESSAIS D'IMPACT DE CORPS MOUS - STATISCHER BELASTUNG, AUSWIRKUNGEN PRÜFUNG VON WEICHEN KÖRPERN	EN 12825	VALORE DICHIARATO - DECLARED VALUE - VALEUR DÉCLARÉE - ANGEGBENER WERT	TEST SUPERATO - TEST PASSED TEST RÉUSSI - TEST BESTANDEN		
RESISTENZA ALLA FLESSIONE, CARICO DI ROTTURA IN N - BENDIND STRENGTH, BREAKING FORCE IN N RESISTANCE À LA LFXION, CHARGE DE ROPTURE IN N - BIEGEFESTIGKEIT, BRUCHLAST EN N	EN 1339	Kn 14,38	CLASSE U14		
CARICO DI ROTTURA IN MPA - BREAKING FORCE IN MPA - CHARGE DE ROPTURE IN MPA - BRUCHLAST EN MPA		-	MPA 46,5		



Kronos 2 ceramiche S.p.A.

Sede legale: Strada delle Fornaci, 20 41126 Modena Italy
Sede amministrativa: Via Giardini, 62 41042 Fiorano Modenese (Mo) Italy
tel. +39 0536 927711 - info@kronosceramiche.com
www.kronosceramiche.com

